

**CERTIFICATE OF ANALYSIS (SAMPLE ID: SA29726)**

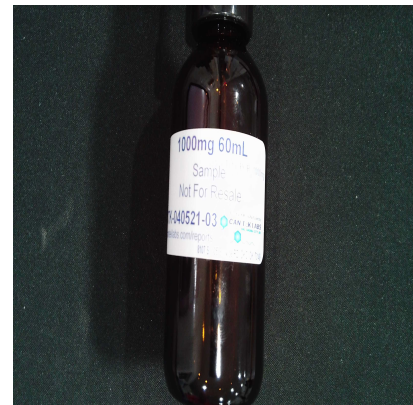
<b>Testing Location:</b>	<b>Customer ID:</b> 37	<b>Order ID:</b> OR9332	<b>Sample Type:</b> Primary
Arkansas	Can-Tek Labs	<b>Lot Number:</b>	<b>Matrix:</b> Oil/Tincture
232 S. Broadview St.	8107 S I-35 Service Rd	Not Entered	<b>Mass:</b> 60g
Greenbrier, AR 72058	Oklahoma City, OK 73149	<b>Batch Number:</b>	<b>Date Collected:</b> 04/05/2021
-	License: Not Entered or N/A	CTK-040521-03	<b>Date Received:</b> 04/06/2021

**Cultivar (Strain) or Sample Description:** PCR 1000mg Tincture 60ml **Date Completed:** 04/08/2021

**CANNABINOID (POTENCY) PROFILE**

**Analysis Date/Time:** 4/7/2021 1337 **Method:** HPLC/DAD **Moisture Content (%):** -  
**Analyst:** PW **Instrument:** Agilent 1100 **Water Activity (aw):** -

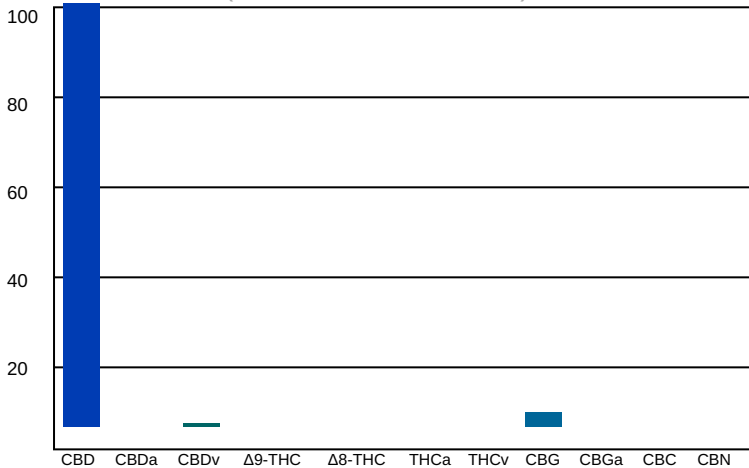
Cannabinoid	Result (%)	Result (mg/g)	Reporting Limit (mg/g)	Result (mg/mL)	Per Unit (mg)
CBD	1.75	17	0.00281	16.8	1050
CBDa	-	-	0.00281	-	-
CBDv	0.0116	0.116	0.00281	0.111	7
Δ9-THC	-	-	0.00281	-	-
Δ8-THC	-	-	0.00281	-	-
THCa	-	-	0.00281	-	-
THCv	-	-	0.00281	-	-
CBC	-	-	0.00281	-	-
CBG	0.0592	0.592	0.00281	0.569	36
CBGa	-	-	0.00281	-	-
CBN	-	-	0.00281	-	-
<b>TOTAL</b>	1.82	18		17.5	1092
<b>TOTAL THC</b>	-	-		-	-
<b>TOTAL CBD</b>	1.75	17		16.8	1050



**UNIT MASS (g):** 60

"- " Not detected above RL.

**Cannabinoid Distribution**  
(% of Total Cannabinoids)



*Deviations from standard operating procedure:* None

*Recoveries for all analyte standards:* 90-110%  
*Replicate Uncertainties:* <5% RSD, <20% RPD  
*Sample/Reagent Blanks:* <RL for all analytes

Values for plant matter are adjusted for moisture content.

Total THC = (THCa x 0.877) + Δ9-THC  
 Total CBD = (CBDa x 0.877) + CBD

Percentage results are reported by mass.  
 mg/g results are reported as mass component per mass material.

*Abbreviations:* UV - Ultraviolet, HPLC - High Pressure Liquid Chromatography, RL - Reporting Limit, RPD - Relative Percent Difference, RSD - Relative Standard Deviation

This information is provided as a service and makes no claims of efficacy and/or safety of this product. Results are applicable only for the sample(s) analyzed and for the specific analysis conducted. This report is for informational purposes only and should not be used to diagnose, treat, or prevent any medical-related symptoms. The statements and results herein have not been approved and/or endorsed by the FDA.

**REPORT OF LABORATORY ANALYSIS**

This report shall not be reproduced, except in full, without the written consent of Felling Analytical Services and Technology (F.A.S.T.), LLC

*Kyle W. Felling*  
 Kyle W. Felling, Ph.D.  
 Laboratory Director

