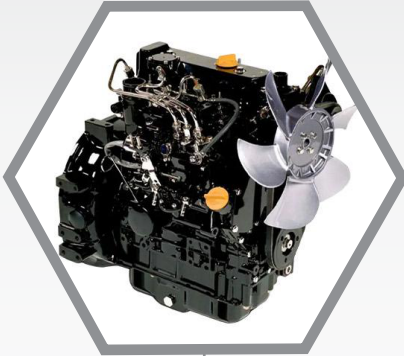




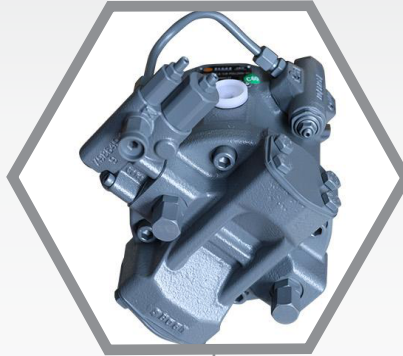
# R57 PRO

## Digging Deeper

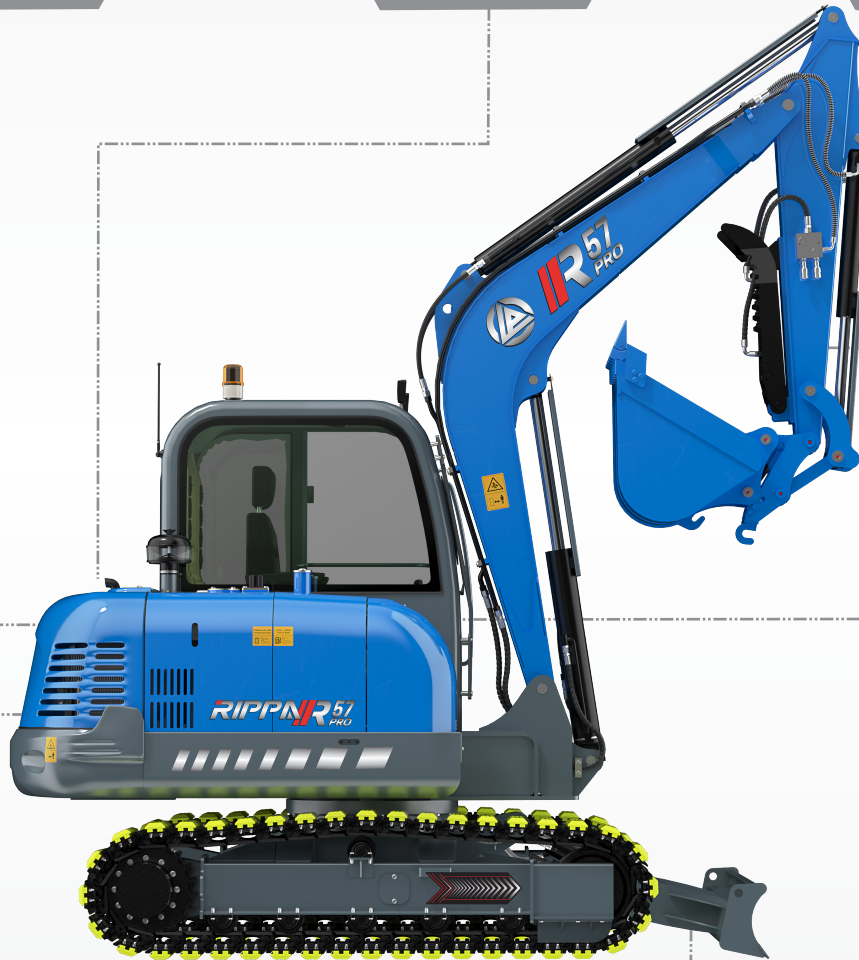
**YANMAR  
4THNV98C ENGINE**



**VARIABLE DISPLACEMENT  
PISTON PUMP**



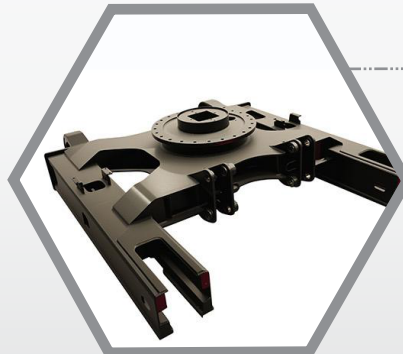
**FEATURES A STANDARD  
THUMB & QUICK-CHANGE**



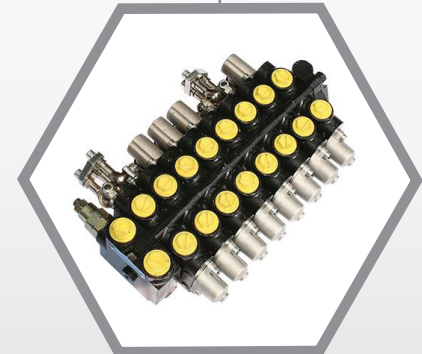
**HIGH & LOW  
TRAVEL SPEED**



**X-TYPE FRAME  
ASSEMBLY**



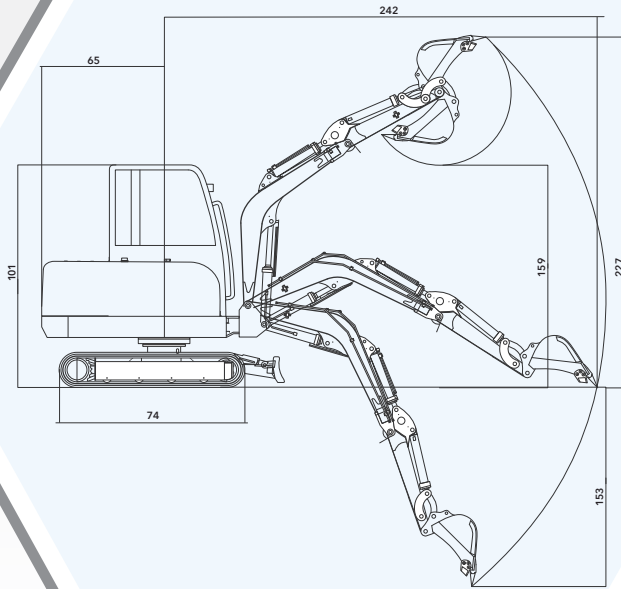
**LOAD  
SENSING VALVING**



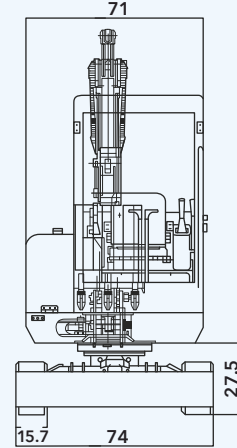


# R57 PRO

# SPECIFICATIONS



UNIT: INCH



## GENERAL

Machine Working Weight	12566lbs	5700kg	Tail Turning Radius	65in	1650mm
Multi-Way Valve	HYTEK		Counterweight Ground Clearance	27.5in	700mm
Hydraulics Pump	HYTEK		Track Contact Surface	100in	2540mm
Travel Motor Brand	ZHTE		Track Full Width	74in	1880mm
Swing Motor	Fujikoshi		Track Shoe Width	15.7in	400mm
Bucket Capacity	3.2-6.2ftm <sup>3</sup>	0.09-0.175m <sup>3</sup>	Minimum Ground Clearance	15.7in	400mm
Boom Length	118.1in	3000mm	Maximum Digging Range	242in	6150mm
Arm Length	63in	1600mm	Maximum Digging Height	227.6in	5780mm
Swing Speed	9rpm	9rpm	Maximum Digging Depth	153.1in	3890mm
Travel Speed	2.6/1.4mph	4.16/2.3km/h	Maximum Unloading Height	159.8in	4060mm
Bucket Digging Force	9891lbf	44kn	Engine Model	Yanmar 47NV94L/4TNV98C	
Arm Digging Force	6619lbf	29kn	Maximum Horsepower	51hp	38.1kw
Cab Full Height	101.6in	2580mm	Maximum Speed	2200rpm	2200rpm
Fuel Tank Capacity	19.3gal	73.0L	Cooling Method	Water Cooling	Water Cooling

## PERFORMANCE & APPLICATION

The **RIPPA R-57 PRO** is a Powerful **5.7-TON EXCAVATOR** with Excellent Operating Efficiency and Adaptability. Is ideal for a Variety of Construction Applications such as Municipal Engineering, Road Construction, Site Leveling, and Demolition. It has a **Strong Powerful and Stable Structure** Capable of Large-Load Earthwork Operations. With a Large Cab, Better Visibility, and Comforts which result in a More Productive Operator and Work Site.

